

# EBA 0101 HDP

The ideal solution for making discarded hard drives from personal computers, notebooks, printers and copiers unusable.

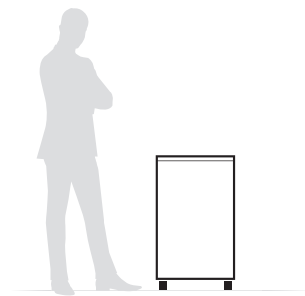
**Level H-3** 3,5" / 2,5" Hard Disks

Punching cycle: 15 s



## Technical specifications

<b>Power</b>	230 V / 50 Hz
<b>Motor capacity</b>	640 Watt single phase motor



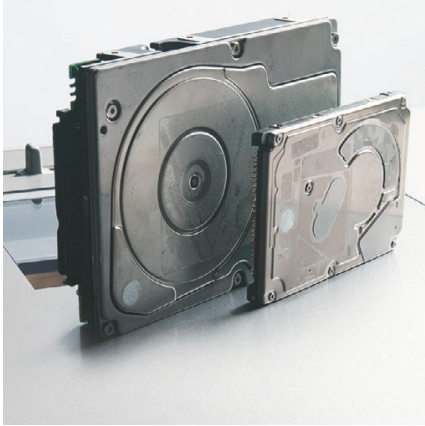
<b>Dimensions</b>	850 x 495 x 470 mm (H x W x D)
<b>Weight</b>	63 kg

## Product characteristics

At the touch of a button, the EBA 0101 HDP punches a hole completely through the hard drive, rendering the stored data unaccessible. The mechanical components, the PC board as well as the hard disc are damaged, which corresponds to security level H-3 of the DIN 66399 standard. Suitable for 3.5" or 2.5" hard drives (single feeding). Adjustable feed chute constructed of high quality steel. Handy slide lever for easy selection of hard drive size (3.5" or 2.5"). Transparent safety flap on the feed chute made of unbreakable plastic. Punching die made from hardened, nickel-plated steel. Sturdy steel endplate. LEDs for illuminating the feed chute during the punching process. Slider mechanism for unloading punching compartment. Destroyed hard drives drop into a sturdy plastic bin inside the cabinet. High-quality wooden cabinet with front opening door. SPS (Safety Protection System) safety package: electronically controlled, hinged safety flap for the feed opening; EASY-SWITCH multifunction control element for start and stop indicates the operational status of the machine with varying colour codes and back-lit symbols; jam protection for punching die with automatic reverse; automatic stop after the punching process; weight sensor for automatic shut-off when the collection bin is full; electronic door protection via a magnetic proximity switch; double motor protection. Quiet and powerful single phase motor rated for continuous operation. Sturdy Twin Drive System with fully enclosed gear box housing. Mobile on castors.

# EBA 0101 HDP

## Features



### SUITABLE FOR 3.5" AND 2.5" HARD DRIVES

The hard drive punch EBA 0101 HDP is designed for the two most common hard drive sizes.



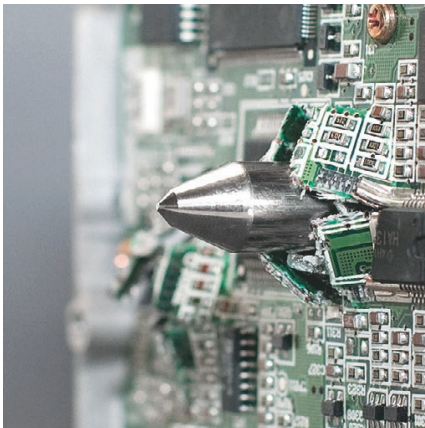
### FEEDING CHUTE WITH SAFETY FLAP

The electronically controlled, transparent safety flap is an important part of the SPS (Safety Protection System) package. The punching die can only be activated if the safety flap is closed.



### EASY-SWITCH FOR INTUITIVE OPERATION

The intelligent multifunction control element indicates the operational status of the machine with colour codes and back-lit symbols for safe and easy operation.



### PUNCHING DIE FROM HIGH GRADE TOOL-STEEL

The punching die is made of hardened, nickel-plated tool steel. Durability is also guaranteed by a powerful single phase motor rated for continuous operation in combination with the sturdy Twin Drive System.

